

Mobile Technology

So Many Tools, So Little Time

Pee Dee GIS UG - February 18, 2015

Chris Bradshaw, VP Marketing, BCS

Who are we?

- Formed in 1998 in Aiken, SC
- Privately held and woman-owned
- Primary focus is GIS for Public Safety
- Esri Gold Tier Partner

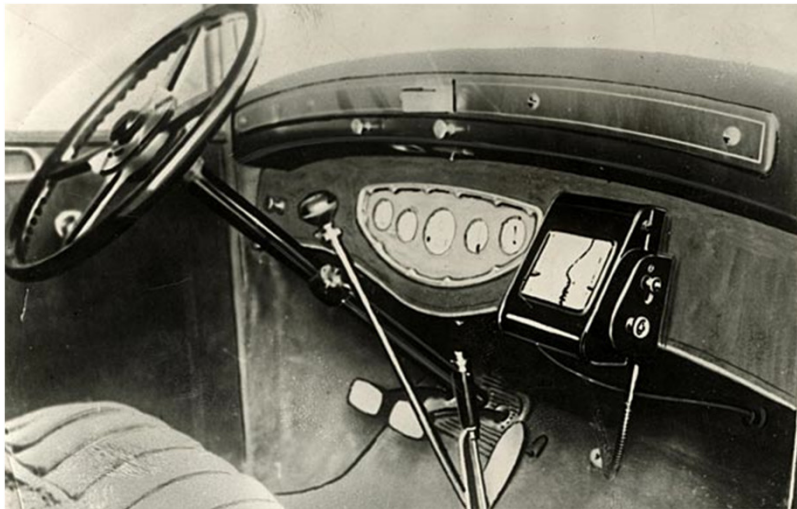
What do we do?

- Company Business Units
 - MARVLIS
 - Public Safety
 - Mobile Technologies
 - Esri Software Sales, Services, Training & Consulting
 - Defense/Intel

What do we do?

- Strong Public Safety Focus
 - MARVLIS
 - MARVLIS Forecast LE
 - TheAddresser
 - Crime Analysis Tools
 - Crime iMap
 - Fire Analysis Tools

Where have we been?



Where are we going?

Old Reliable



- Disconnected
- Accurate
- Simple GIS Interface
- Rugged
- \$\$\$



Apple

- Server or AGOL
- App Distribution
- Large Developer Network
- More Refined Dev Environment

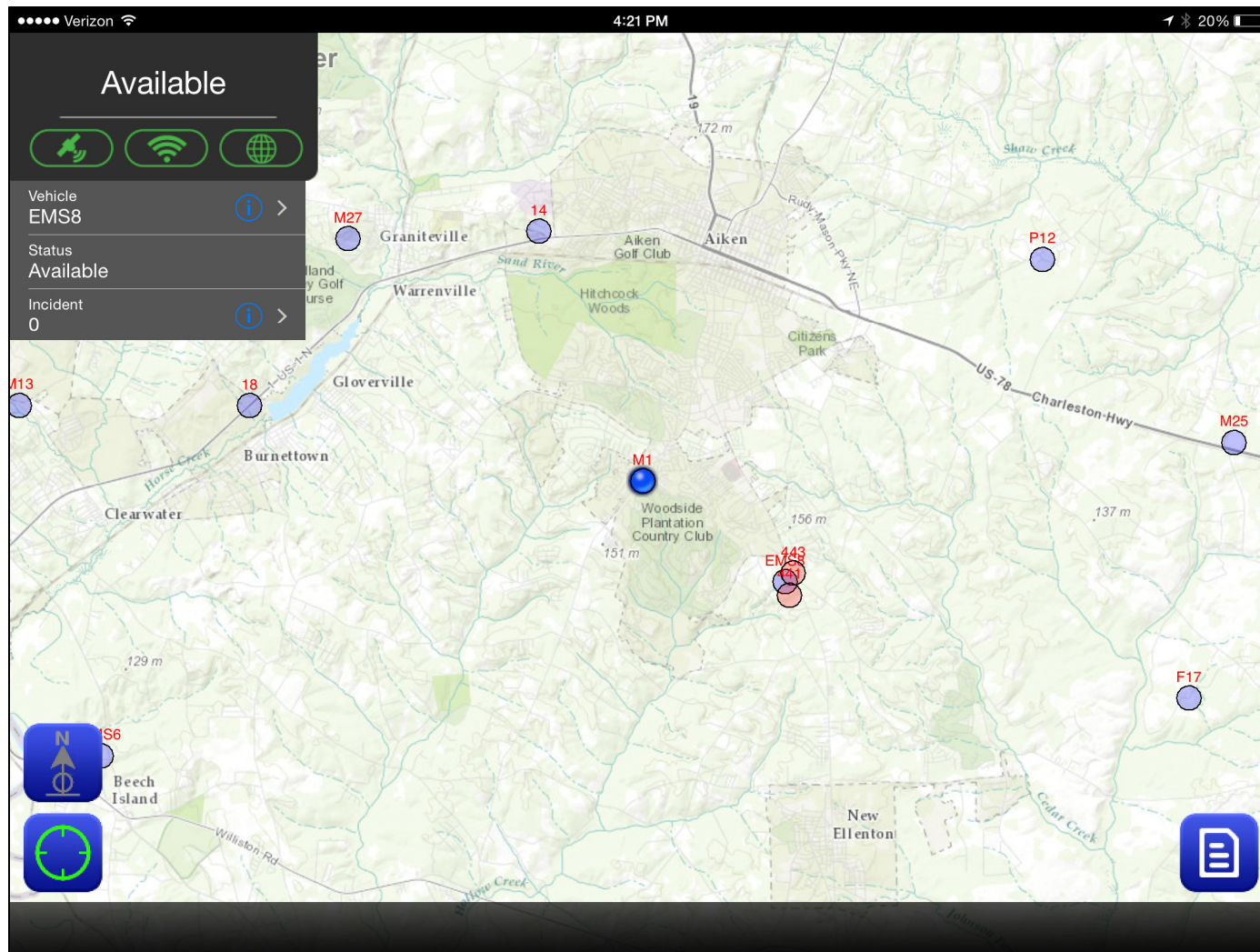


- iPhone or iPad
- Inexpensive Hardware
- Not Rugged
- UI Simplicity

MARVLIS Client for iOS

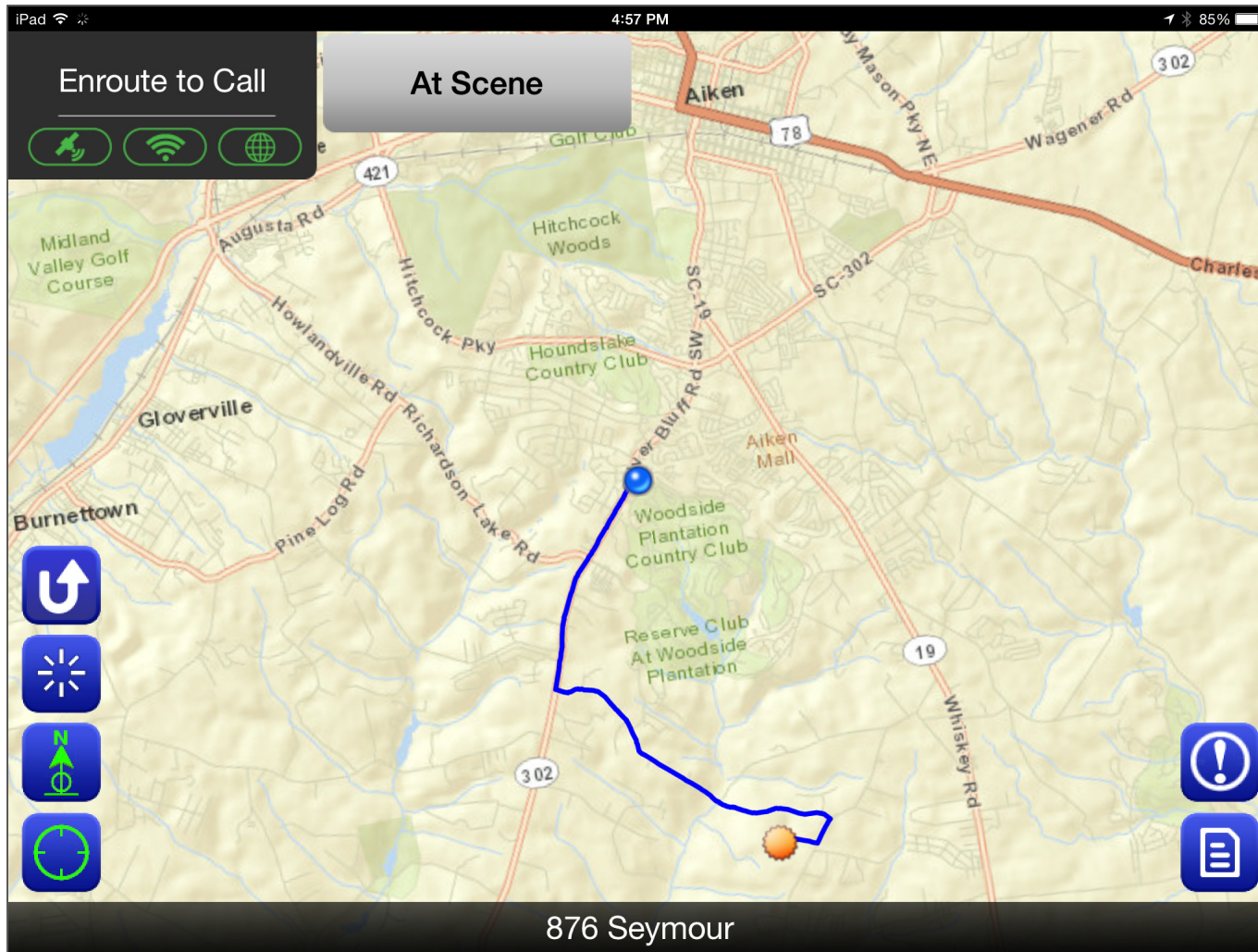


MARVLIS Client for iOS



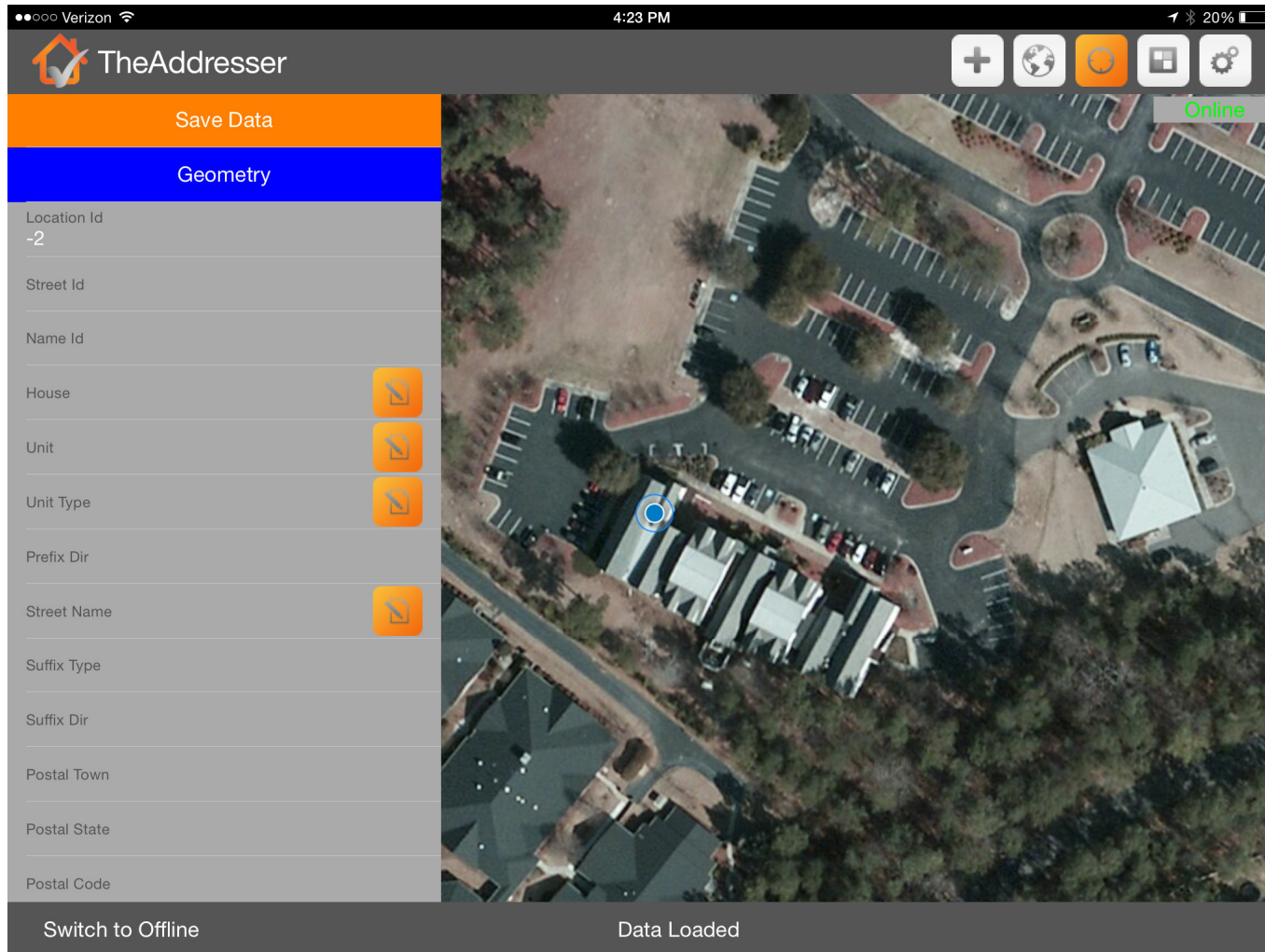
Bradshaw Consulting Services
High Performance Solutions

MARVLIS Client for iOS



Bradshaw Consulting Services
High Performance Solutions

TheAddresser for iOS



Android

- Phone or Tablet
- Inexpensive Hardware
- Wide Range of Choices
- AGOL or Server
- Large User Base
- Development Environment/Fragmentation



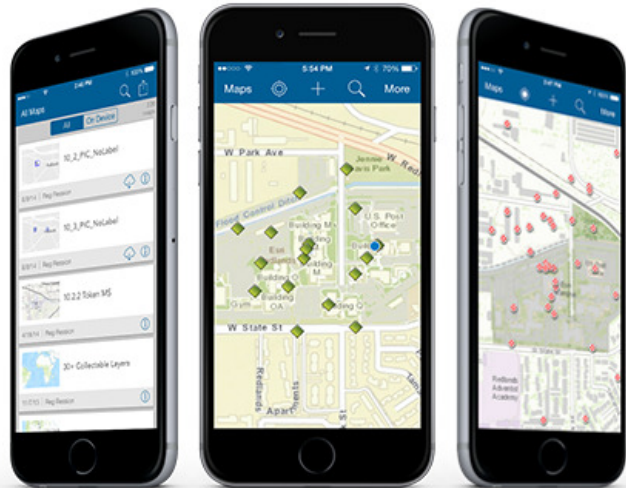
Microsoft



- Tablet/Laptop Hybrid
- Standard Windows Dev
- AGOL, Server, or Standalone Apps
- Not Rugged
- Low Adoption Rate
- \$\$\$

Esri Collector for ArcGIS

- Android or iOS
- Data Creation & Data Editing
- Works Online or Offline
- No Customization
- Photo & Video



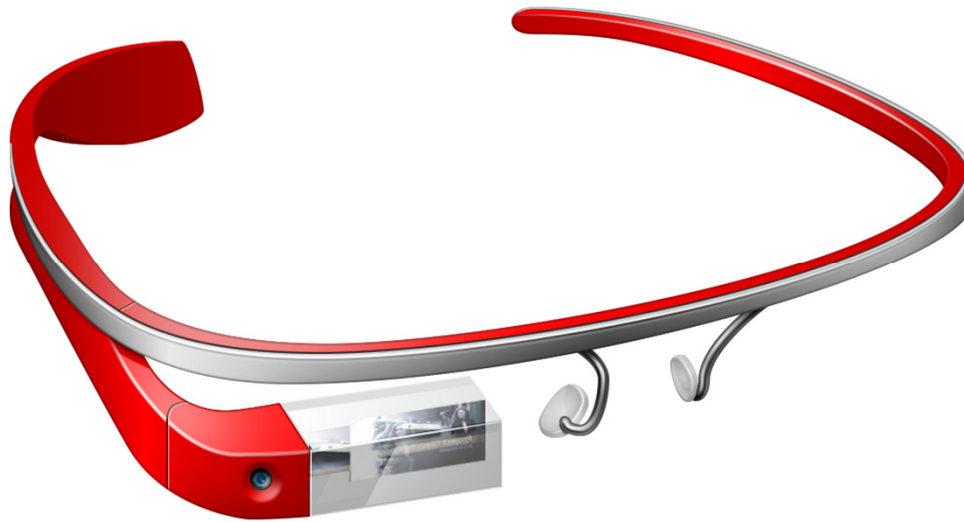
- ArcGIS Organizational Account
- AGOL, Portal, or Server
- Android 4.0 & iOS 7

Trimble R1 GNSS

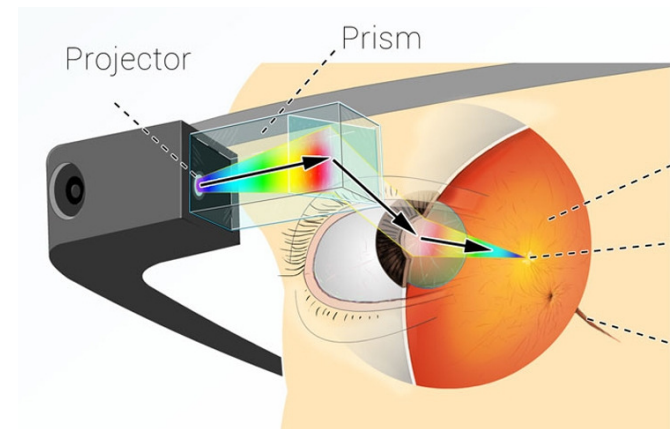
- Choose Your Own Collection Device
- Connects Through Bluetooth
- Submeter Accurate
- Rugged and Lightweight
- Price?
- Availability?



Cool Toys or Productivity Tools?



- Usefulness?
- Public Backlash
- Adoption
- \$\$\$



“Wearables are, by their very nature, intensely personal devices.

They are collecting information about me and my experiences, my body, my location, my environment, my activities, my field of vision, my interests.

Brands cannot storm into this deeply personal experience and be welcome.

They will need to think of how they can use this data in a way that is relevant and will provide users with a service or utility that fits into their augmented lives.”

- Tunde Cockshott (Amaze)



Mobile Technology

What's Right For You?

Questions?