

Top 10 Things at Esri UC 2015 & ArcGIS Pro

Jim Tochtermann, VP - Research & Development

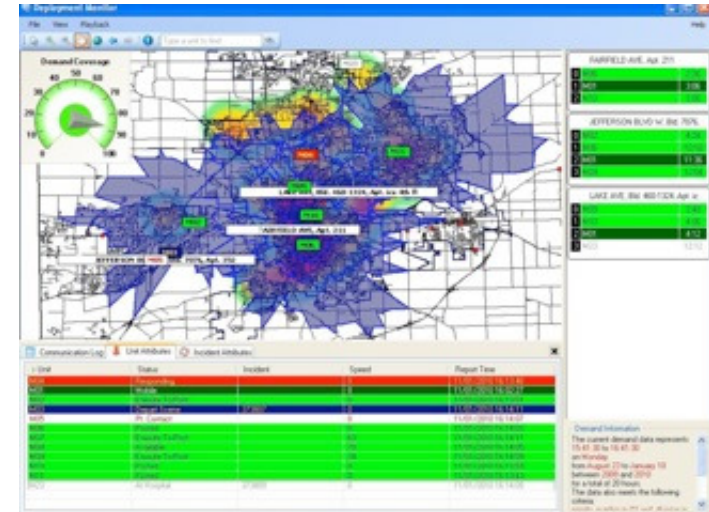
Who is BCS?

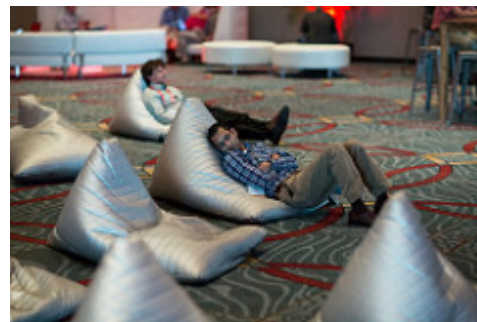
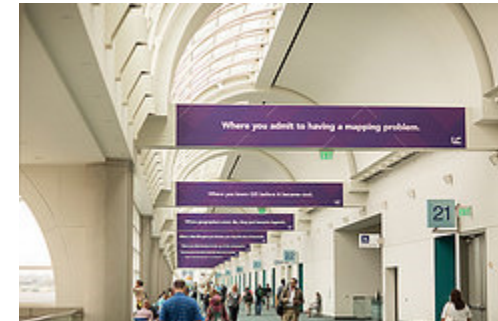
- Formed in 1998 in Aiken, SC
- Privately held and woman-owned
- Primary focus is GIS for Public Safety
- Esri Gold Tier Partner



What does BCS do?

- Company Business Units
 - MARVLIS
 - Public Safety
 - Mobile Technologies
 - Esri Software Sales, Services, Training & Consulting
 - Defense/Intel





Esri UC Top 10

10 – Time To Embrace Web GIS

The Web has changed how we practice and apply GIS tools & capabilities. This trend has been evolving for years and has finally made the turn.

Portals – Private/Public, On-Premise/Cloud. The hub/center of an organizations GIS. The “window” to Web GIS.

Content – Foundation of Web GIS. Reliable, authoritative, ready-to-use. Updated regularly.

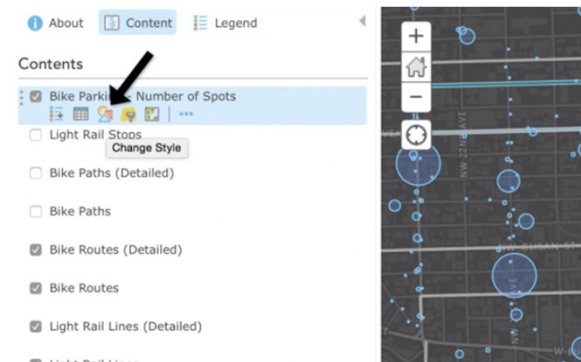
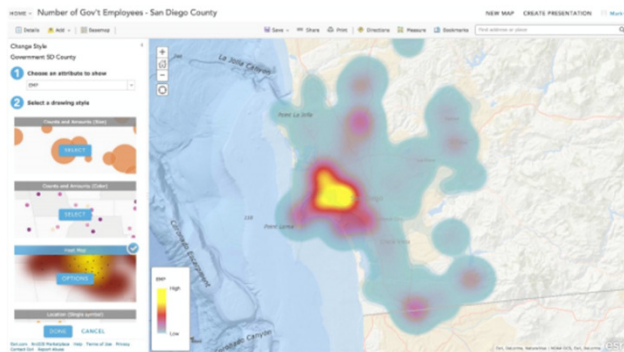
Analysis – Heart and soul of Web GIS. Shared analysis and geoprocessing tools that can be used by anyone. Easy to understand and used to solve common geospatial problems.

Esri UC Top 10

9 –Smart Mapping

Data driven web cartography & exploration. Right tools at the right time when authoring also helps explore the data in different ways. More than just a map.

Built into ArcGIS Online & Portal for ArcGIS at 10.3.1



Esri UC Top 10

8 – 3D Visualization

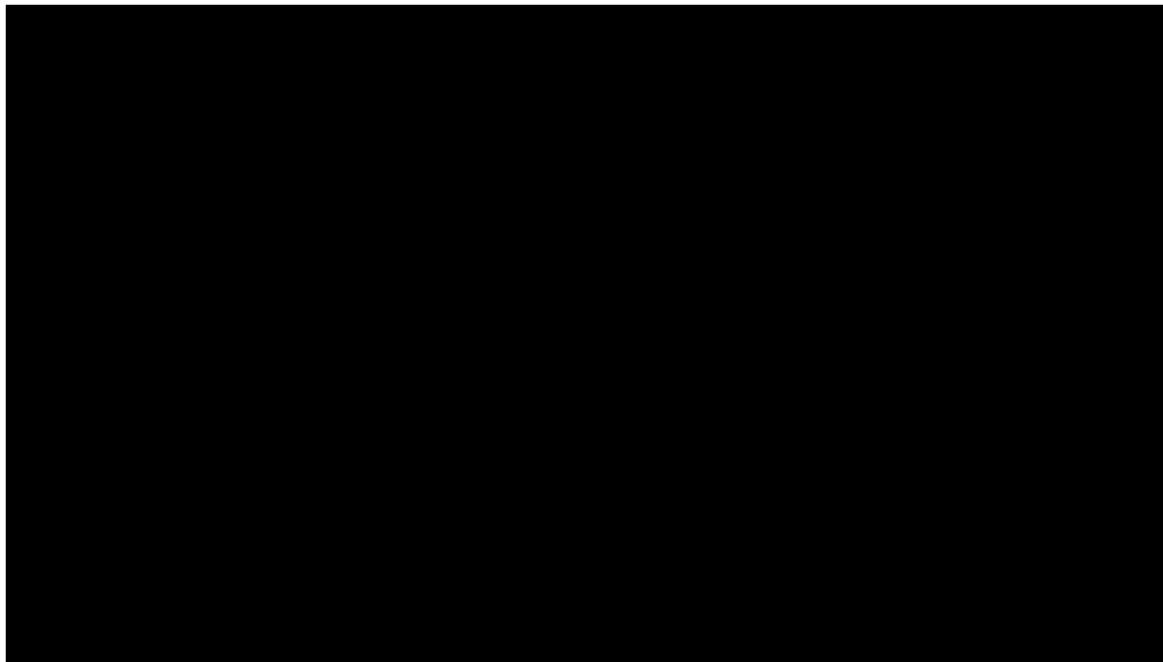
3D in the Browser. Availability & scalability is growing outside of modeling.



Esri UC Top 10

7 – Big Data & GeoAnalytics Tools

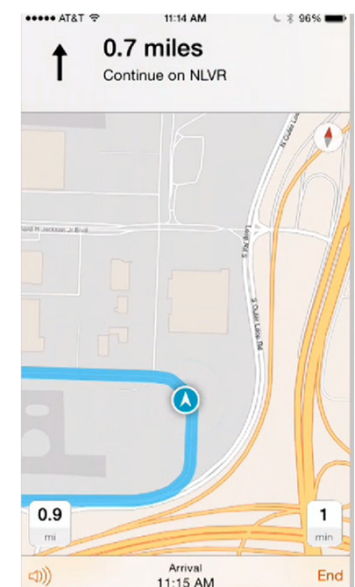
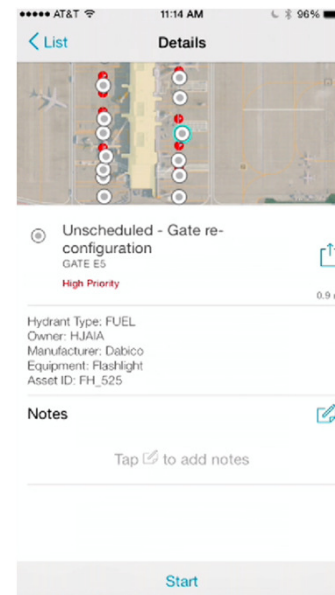
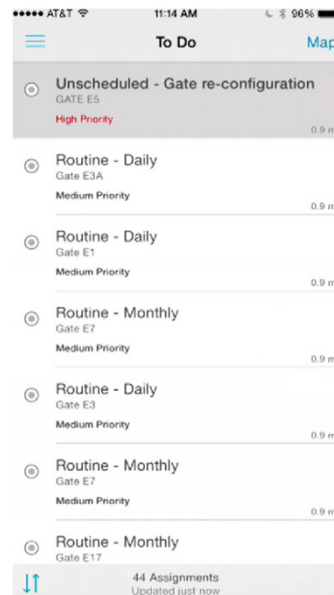
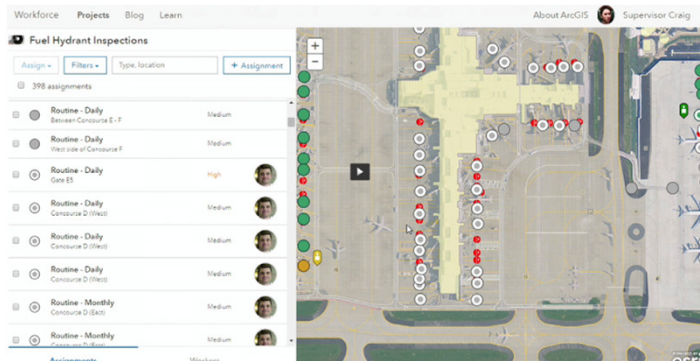
Open Source GIS tools for Hadoop & Cloudera. Filter & organize Big Data so it can be analyzed and visualized from a geographic perspective.



Esri UC Top 10

6 – New Collector Apps

Workforce Dispatcher, Workforce Mobile, & Navigator work with Collector. Coordinate work assignments & direct field workers where they need to be.

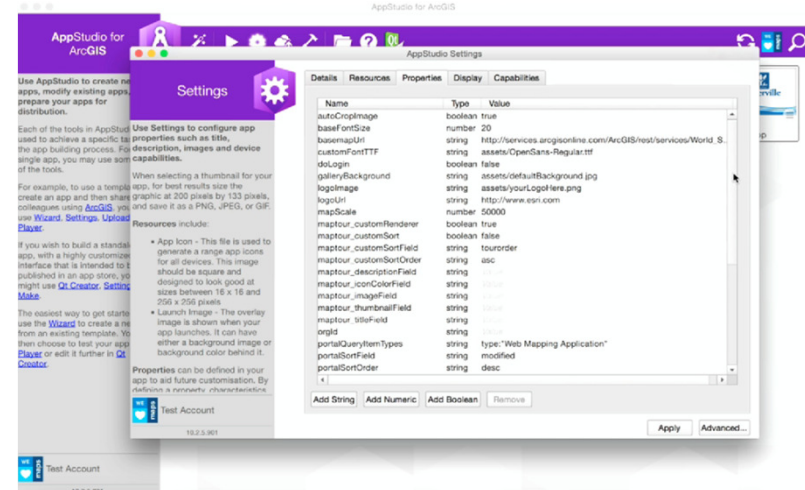
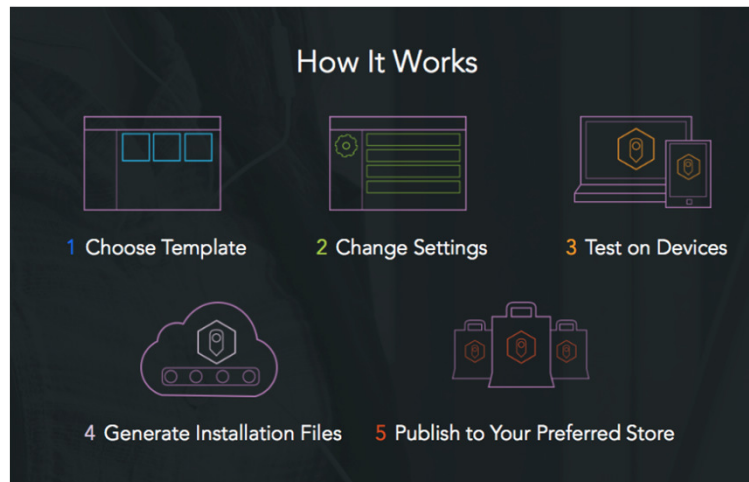
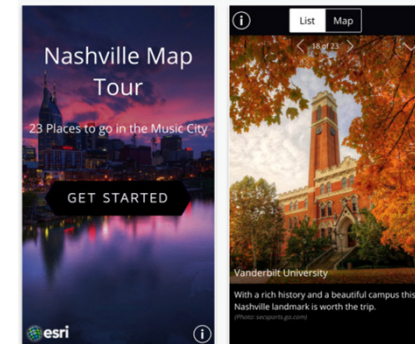


Esri UC Top 10

5 – AppStudio for ArcGIS

Allows developers & non-developers to build mapping apps that run natively across multiple platforms.

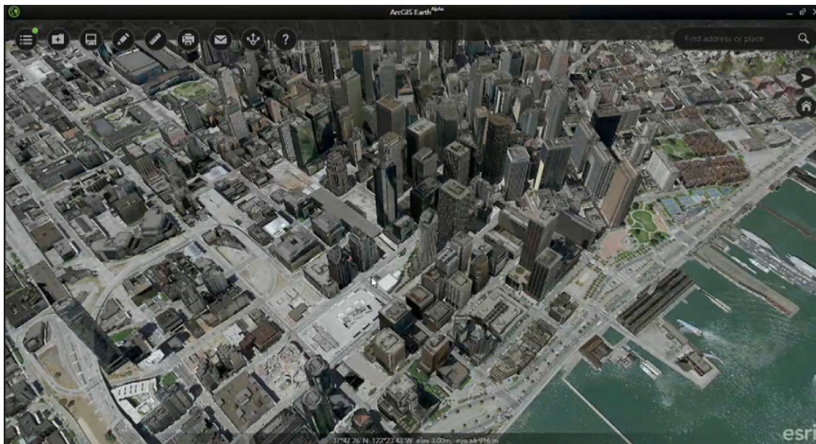
iOS, Android, Windows Phone, Windows, OS X, Linux.



Esri UC Top 10

4 – ArcGIS Earth

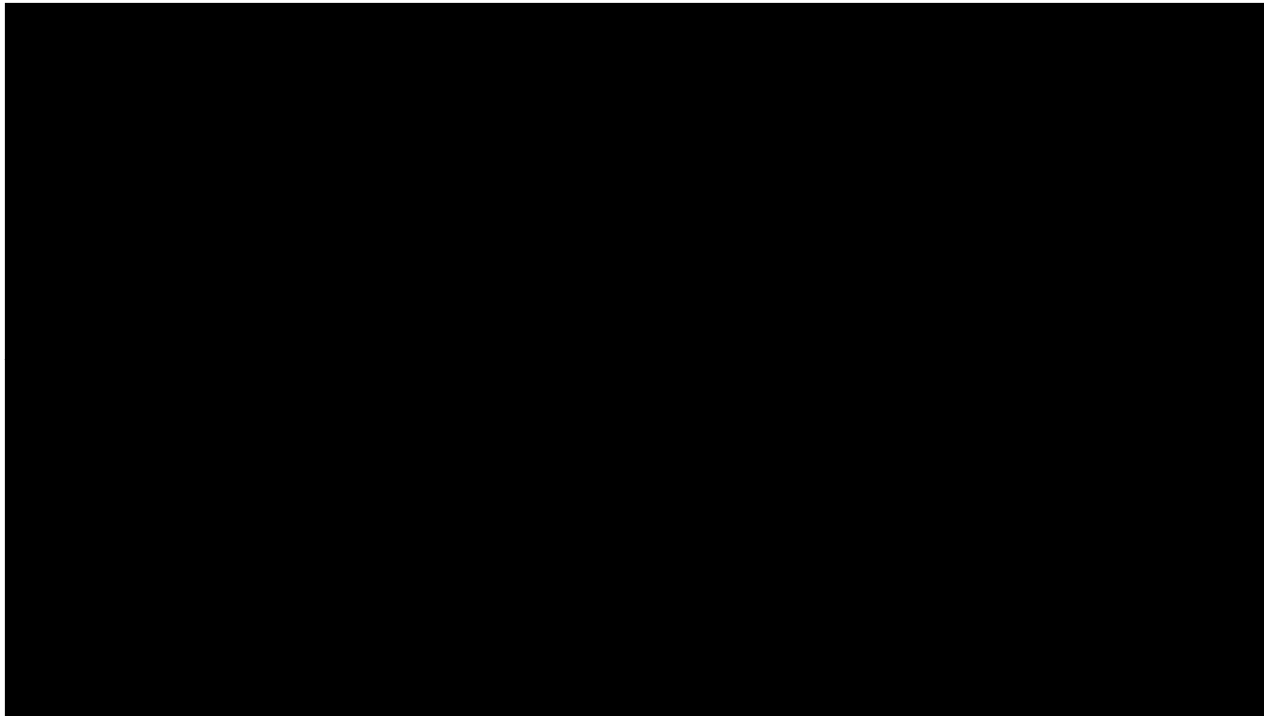
Freely available, lightweight installable desktop app, 2D & 3D, Full KML/KMZ Support. Windows initially, other OS later.



Esri UC Top 10

3 – Drone Support

New application/tools to rapidly ingest, process, & share UAV collected data.



Esri UC Top 10

2 – Statistical & Scientific Package Support

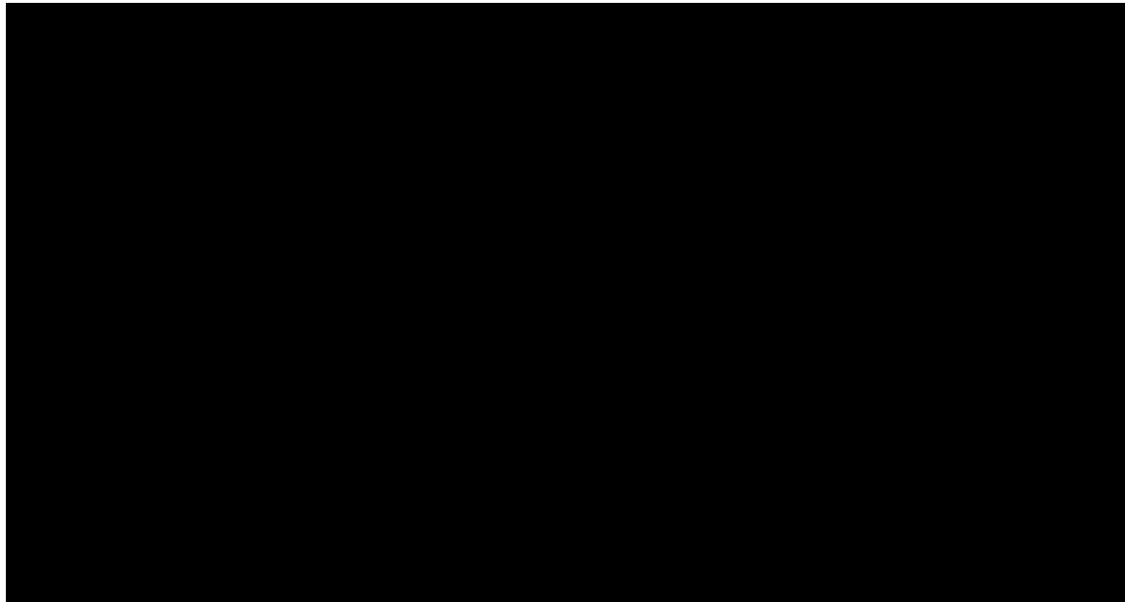
R & SciPy will run directly as geoprocessing tools/scripts. R developers can access ArcGIS datasets from within R, save R results back to ArcGIS datasets and equivalent representations in R.



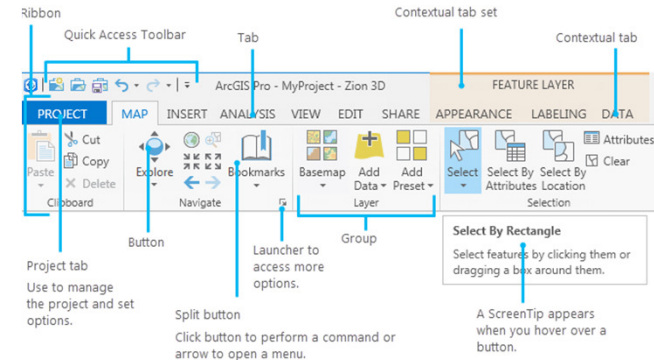
Esri UC Top 10

1 – Vector Tiles Support

Fast. Dynamic interactive cartography can be customized, removes need to pre-cache different styled tiles. Provides access to underlying data. Rotate labels & symbols as map is rotated.



ArcGIS Pro



- It IS what users have been pleading for:
 - Not a response to any other product, company, or effort
 - A decade in the making. Built for Web GIS.
 - 64-Bit & true multithreading
 - Faster geoprocessing
 - Project-based (*multi-layout, i.e. old ArcView*)
 - New graphics engine (*leverage CPU & GPU where appropriate*)
 - Updated UI (*Ribbon interface, i.e. MS Office*)
 - SxS Deployment w/ existing ArcGIS Products
 - Version agnostic
 - Next generation of ArcGIS for Desktop
 - Evolving as “Platform” evolves
 - Allows for incremental release of new features & functionality
 - Not repeating past rollout mistakes (7.x/8.x)

GIS is Evolving

Are you ready?

Questions?